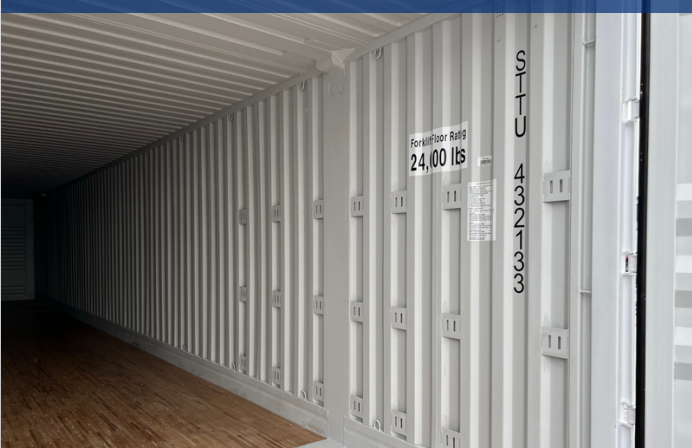


Domestic Container Specification

OUR CONTAINERS



STG Logistics' 53' containers are designed to efficiently handle your cargo on its journey from **Port to Door**.



- ⦿ Designed to meet or exceed ANSI and AARM930 specifications.
- ⦿ Contain 110 cargo securement locations:
 - 56 D-rings
 - 12 lashing bars
 - 6 rows of A-track (21 attaching points)
- ⦿ Lightweight design to accommodate heavy loads.
- ⦿ GPS equipped.
- ⦿ Container prefixes are STTU and XPOU.

Specifications

Inside Width	99 3/8"
Inside Height	109 1/2"
Overall Length	53'
Inside Length	52' 6 1/2"
Door Opening Height	109 1/2"
Door Opening Width	98"
Gross Weight Rating	71,650 lbs.
Tare Weight	10,000 lbs.
Floor Rating	24,000 lbs
Cubic Capacity	3,970 cu. ft.
Walls	Corrugated Steel
Floor	Laminated Oak